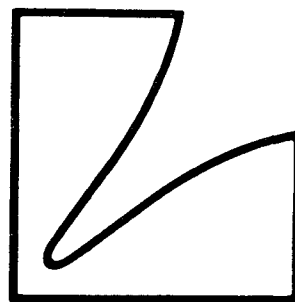


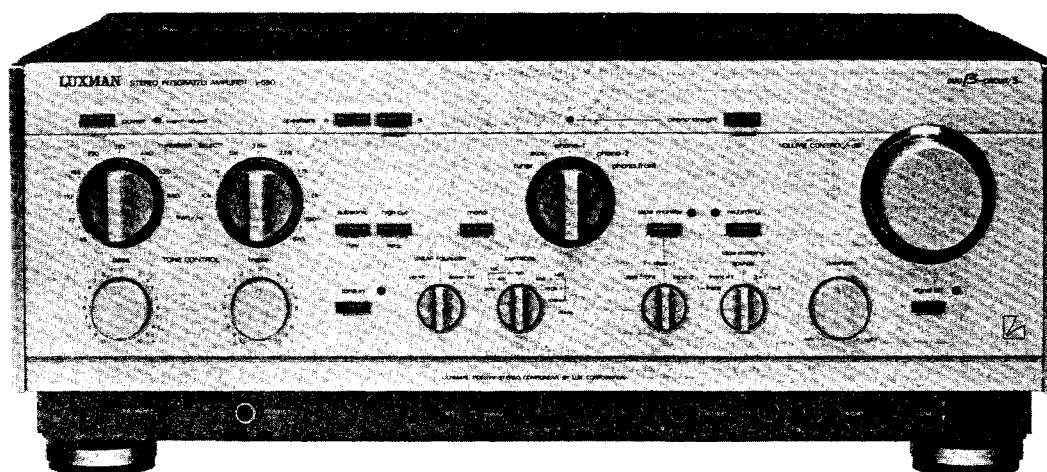
SERVICE MANUAL



Duo-Beta Circuit/S
Stereo Integrated Amplifier

L-550

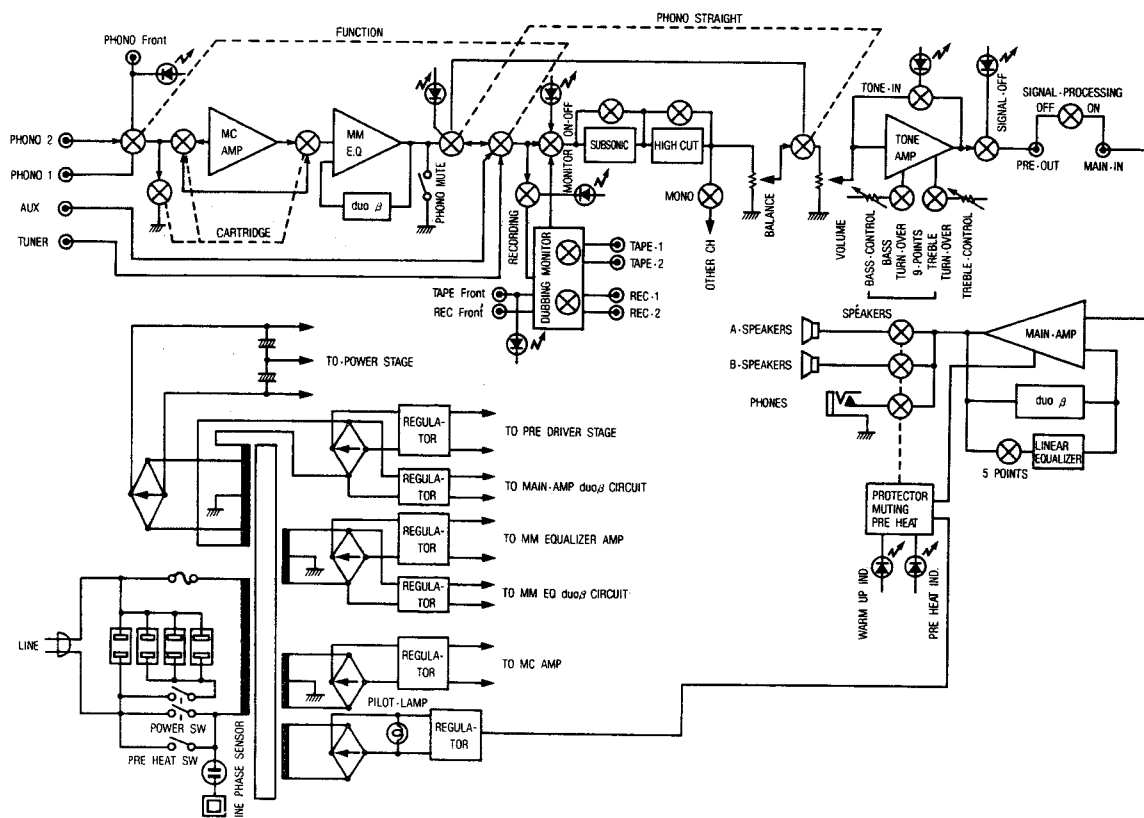
Pure ClassA



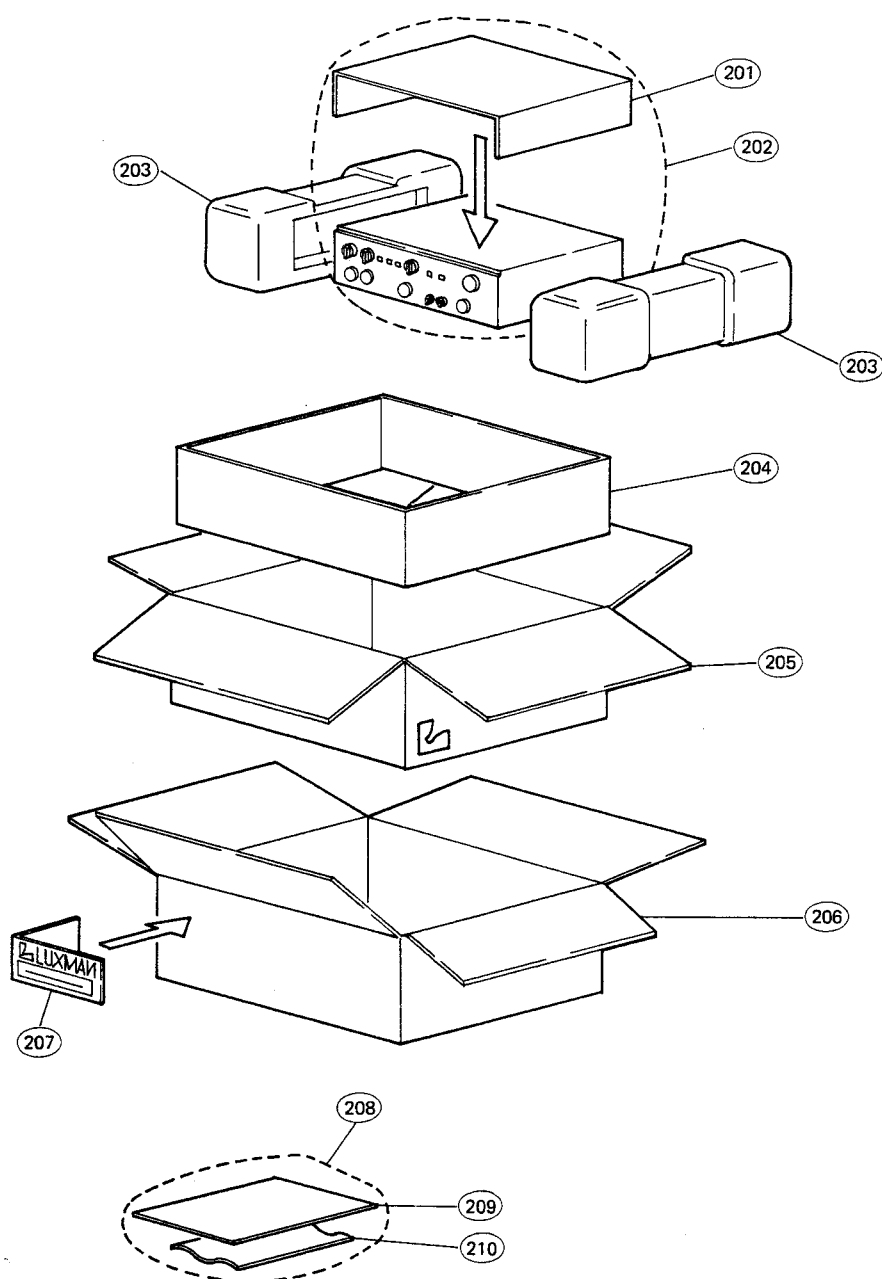
Contents

Block Diagram	1
Adjustment Locations	2
Adjustment Procedure	3
調整手順書	4
Exploded View Parts List	5, 6
Packing Material Parts List	7
PCB PB-1399 Parts List	8
PCB PB-1400 Parts List	8, 9
PCB PB-1400-1 Parts List	10
PCB PB-1400-2 Parts List	10, 11
PCB PB-1400-3 Parts List	11
PCB PB-1400-4 Parts List	12
PCB PB-1401 Parts List	12
PCB PB-1401-1 Parts List	12, 13
PCB PB-1401-2 Parts List	13
PCB PB-1401-3 Parts List	14
PCB PB-1401-4 Parts List	14
PCB PB-1401-5 Parts List	14
PCB PB-1401-6 Parts List	14
PCB PB-1401-7 Parts List	14
PCB PB-1401-8 Parts List	15
PCB PB-1402 Parts List	15
PCB PB-1402-1 Parts List	16
PCB PB-1402-2 Parts List	17
PCB PB-1402-3 Parts List	17
PCB PB-1402-4 Parts List	18
PCB PB-1402-5 Parts List	18
PCB PB-1402-6 Parts List	18
PCB PB-1402-7 Parts List	18
PCB PB-1402-8 Parts List	18
PCB PB-1403, 1403-1 Parts List	18, 19
PCB PB-1403-2, -3 Parts List	19
Miscellaneous Parts List	20
Destination's Parts List	20
IC Handling Guide	21
Schematic Diagram	22, 23
Specifications	24

L-550 Block Diagram



L-550 Packing Material Parts List



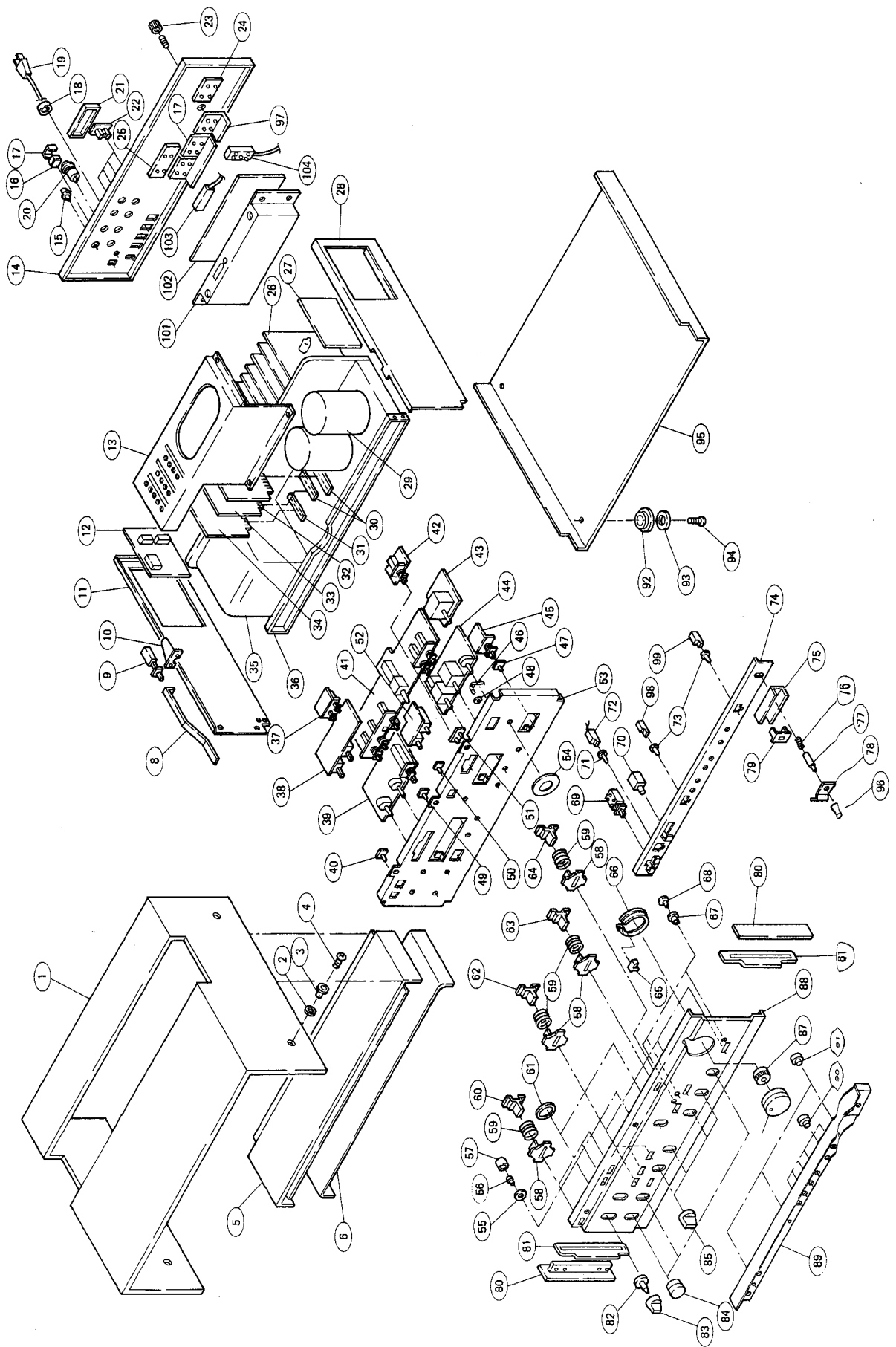
Symbol No.	Stock No.	Description
201	WZ1011	Paper, Protector
202	XC1028A	Sack, Poly
203	XB1057	Pkg, Tray
204	XD1050	Pad
205	XA1304	Carton, Pkg.
206	XH1056	Outer Carton
207	XG1068	Label, Voltage (120V)
	XG1069	Label, Voltage (220V)
	XG1070	Label, Voltage (240V)
208	XC1031	Sack, Poly
209	ME0211	Owner's Manual (EX)
	MA0151	Owner's Manual (J)
210	WZ1204	Duster

L-550 Exploded View Parts List

Symbol No.	Parts No.	Description	Q'ty	Symbol No.	Parts No.	Description	Q'ty
1	WB1097	Wooden Case	1	48	UZ1077	Bush, 1077	1
2	YWA040A	Washer, 4ø	4	49		PB-1402-7	1
3	WD1144	Escutcheon	4	50		PB-1402-8	1
4	YJB40C14	Screw, M4x10	4	51		PB-1401-6	1
5	WT1044	Ventilation, 1044	1	52		PB-1401-3	1
6	WT1046	Ventilation, 1046	1	53	UB1074-2	Sub Panel	1
7		PB-1401-4	1	54	WQ5005	Fiber	1
8	UZ1295	Shaft, 1295	1	55	WE1151	Spacer	2
9	SP0080	SW, Push SDU4P TV-5 (power)	1	56	WE1113	Protector	2
10	UR1337	Bkt., 1337	1	57	WZ1188	Spacer	1
11	UD1156-2	Side Panel	1	58	WE1103	Protector	11
12		PB-1402-1	1	59	UU1042-1	Spring	11
13	UJ1102	Cover, 1102	1	60	WJ1166-2	Knob, Mold	3
14	UC1209-1	Rear Panel (J,A)	1	61	WD1141	Escutcheon	3
	UC1209-2	Rear Panel (AE)	1	62	WJ1165-1	Knob, Mold	6
	UC1209-3	Rear Panel (AK,EK)	1	63	WJ1165-2	Knob, Mold	1
15	AT5026A	Terminal, SP Black	4	64	WJ1166-1	Knob, Mold	1
	AT5026B	Terminal, SP Red	4	65	WG1020	Acryl, Pilot	1
16	UZ1244	Housing, LPS (J)	1	66	WD1140	Escutcheon	1
17	UZ1245	Termianl, LPS (J)	1	67	WD1145	Escutcheon	4
18	BU0033	Bush (AK,AZ)	1	68	WE1112	Protector	7
	BU0039	Bush (EG)	1	69	SP0090	Preheat	1
	BU0080	Bush (J)	1	70	AJ0014	Jack LJ264-1-7	1
19	BK0018	AC Cord (120V)	1	71	TD0232	LED (Orange)	1
	BK0022	AC Cord (220V)	1	72	AS0263	Socket, LED	1
	BK0023	AC Cord (240V)	1	73	TD0233	LED (Green)	2
	BK0048	AC Cord (J)	1	74	UH1038	Channel, 1038	1
20	AL0001	Lamp, BNB-2 (J)	1	75	UZ1299	Bkt., 1299	1
21	UJ1107	Cover, 1107 (E)	1	76	UU1043	Spring, 1043	1
22	AC0010	AS Socket MD-40 (E)	1	77	UZ1296	Shaft, 1296	1
	AC0055	AS Socket S-I6488 (J)	1	78	UZ1297	Bkt., 1297	1
	AG0110	Terminal, GNG Lux-1260	1	79	UZ1298	Bkt., 1298	1
24		PB-1401-7	1	80	WC1037	Ornametn Plate	2
25		PB-1400-4	1	81	UW1153	Spacer	2
26	BE1088	Heat Pipe	1	82	WJ1164	Knob, Mold	3
27		PB-1401-1	1	83	WK1134	Knob, Metal	3
28	UH1056-1	Side Panel	1	84	WH1132	Knobset	3
29	CE1454	Cap, 50V 30,000uF	2	85	WH1133	Knobset	4
30	AS0258	PB Socket 18S	2	86	WK1135	Knob, Metal	1
31	AS0192	PB Socket 10S	1	87	WJ1163	Knob, Mold	1
32		PB-1400-2b	1	88	WA1242-3	Panel, Front	1
33		PB-1400-2a	1	89	WA1243	Panel	1
34		PB-1400-3	1	90	AT0147	1P Pin Jack UA0036	6
35	PT2591	Trans, Power P-2591(J)	1	91	WE1112	Protector	7
	PT2593	Trans, Power P-2593(E)	1	92	WN1024	Foot, Metal	4
36	UH1037	Channel Bar	1	93	WN1025	Felt, Foot	4
37		PB-1401-5 (0273)	1	94	YJB40C08	Screw, M4x14	4
38		PB-1402	1	95	UE1116	Bottom Plate	1
39		PB-1402-2	1	96	WJ1168	Knob, Mold	2
40		PB-1401-8	1	97		PB-1411	1
41		PB-1401	1	98	AS0264	Socket, LED	1
42		PB-1402-4	1	99	AS0265	Socket, LED	1
43		PB-1402-3	1	100	UR1334	Bkt.	1
44		PB-1401-2	1	101	UK1122	Plate, Shield	1
45		PB-1402-5	1	102		PB-1400	1
46	AL0070	Lamp	1	103	SZ0024	Cable, Remote (Function)	1
47		PB-1402-6	1	104	SZ0025	Cable, Remote (Cartridge)	1
48	UZ1077	Bush, 1077	1	Accessory			
49		PB-1402-7	1		ME0211	Owner's Manual (EX)	1
50		PB-1402-8	1		MA0151	Owner's Manual (J)	1

L-550

Exploded View



L-550 調整手順

1) MCヘッドアンプ部定電圧電源部DC Off Setの調整

マッテング条件 Input Selector.....Phono Front
Cartridge Selector.....MC 300-ohm
Phono Input (Front).....Open

- (1) MCヘッドアンプ部 (PB-1400) に示すチェック端子W36 (AVR. +側) 及びW38 (AVR. -側)、W31 (L-ch出力) 及びW29 (R-ch出力) のそれぞれと対アース間にDC電圧計を接続する。
- (2) Power SwitchをONにし、W36、W38に接続した電圧計が、+10.25V、-10.25Vになる様PB-1400に示すVR102 (+側) 及VR103 (-側) にて調整する。

2) MCヘッドアンプ入力Off Set調整

- (1) カートリッジインピーダンススイッチを300-ohmの位置にする。
ファンクションスイッチをPhono Frontにする。
- (2) Phono Frant入力端子に高感度DC電圧計を接続し、Powr Sw ON、2分後、+150 μ Vになる様VR101a (L-ch) VR101b (R-ch) により調整する。(PB-1400)

3) プリアンプ部定電圧電源の調整

- (1) PB-1400-1 に示すチェック端子W22 (+側) 及W17 (-側) と対アース間にDC電圧を接続する。
- (2) PB-1400-1 に示すVR201 (+側) 及VR202 (-側) にて+31.25V、-31.25Vになる様調整する。

4) イコライザー部DC Off Setの調整

Phono Input (Front) にショートピンを入れる。

- (1) PB-1401-1 に示すチェック端子P-2 コネクターポストと対アース間にDC電圧計を接続する。
※コネクタポストシルクNo 1 側→Lch. No 3 側→Rchとなっています。
- (2) PB-1400-1 に示すVR401a (Rch) 及VR401b (Lch) にてOVになる様調整する。

5) メイン部定電圧電源の調整

- (1) Volume Controlを最少にし各フィルタースwitchはOff又はディフィートにしておく。
- (2) PB-1400-3 に示すチェック端子C312 (+側) 及C311 (-側) と対アース間にDC電圧計を接続する。
- (3) PB-1400-3 に示すVR301 (+側) 及VR302 (-側) にて+46.5V、-46.5Vになる様調整する。

6) メイン部DC Off Set 及アイドリングの調整

- (1) PB-1403-2 に示すチェック端子TP (Lch) 及PB-1403-3 に示すチェック端子TP (Rch) と対アース間にDC電圧計を接続する。
- (2) PB-1400-2 (Lch. Rch. で2枚有ります。) で示すVR351にてOVになる様調整する。
- (3) PB-1403-2 に示すR814aの両端 (0.22 Ω Lch) 及PB-1403-3 に示すR814bの両端 (0.22 Ω Rch) にそれぞれDC電圧計を接続する。
- (4) PB-1403に示すVR801a (Lch) 及PB-1403-1 に示すVR801b (Rch) にて160mVになる様調整する。

※ プリヒーティング: Power SwitchをOFFの状態でのスイッチをONにするとプリヒーティングのインジケータが点灯し、他のインジケータが点灯せず又ファイナルのトランジスターへの電流だけがカットされ、その他は動作状態となっています。消費電力は約40W。

Alignment Procedure

1. Alignment of MC Headamp. Regulator & DC Offset

Setting Conditions - Input Selector: Phono Front
Cartridge Selector: MC 300-ohm
Phono Input (Front): Open

- (1) Connect a DC voltmeter in between the ground and the test-points shown on MC Headamp. section (PB-1400), W36(AVR, positive) and W38(AVR, negative), and W31(L-CH output) and W29(R-CH output) respectively.
- (2) Press to switch Power Switch ON and adjust VR102(positive) and VR103(negative) shown on PB-1400 to make the DC voltmeter connected to W36 and W38 read +10.25V and -10.25V respectively.

2. Alignment of MC Headamp. Input Offset

- (1) Set Cartridge Impedance Selector at 300-ohm and Input Selector Button at Phono Front.
- (2) Connect a high sensitive DC voltmeter and press to switch Power Switch ON. After 2 minutes, adjust VR101a(L-CH) and VR101b(R-CH) on PB-1400 to make the voltmeter read +150uV.

3. Alignment of Preamplifier Section Regulator

- (1) Connect a DC voltmeter in between the ground and the test-points shown on PB-1400-1, W22(positive) and W17(negative).
- (2) Adjust VR201(positive) and VR202(negative) shown on PB-1400-1 to make the voltmeter read +31.25V and -31.25V respectively.

4. Alignment of Equalizer Section DC Offset

Insert short pin-plugs into Phono-Front Input Jack.

- (1) Connect a DC voltmeter in between the ground and the test-point shown on PB-1401-1, P-2 connector post (No. 1 for L-CH, No. 3 for R-CH).
- (2) Adjust VR401a(R-CH) and VR401b(L-CH) shown on PB-1401-1 to make the voltmeter read 0V.

5. Alignment of Mainamp. Section Regulator

- (1) Turn Volume Control to the minimum and set each Filter Switch at OFF or Defeat position.
- (2) Connect a DC voltmeter in between the ground and the check-points shown on PB-1400-3, C312(positive) and C311(negative).
- (3) Adjust VR301(positive) and VR302(negative) to make the voltmeter read +46.5V and -46.5V respectively.

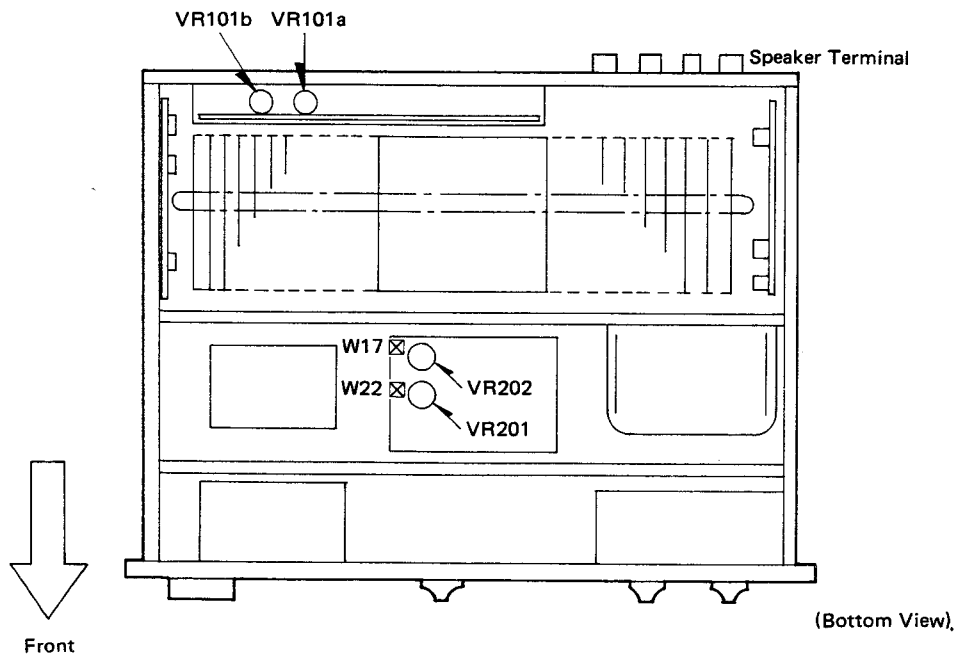
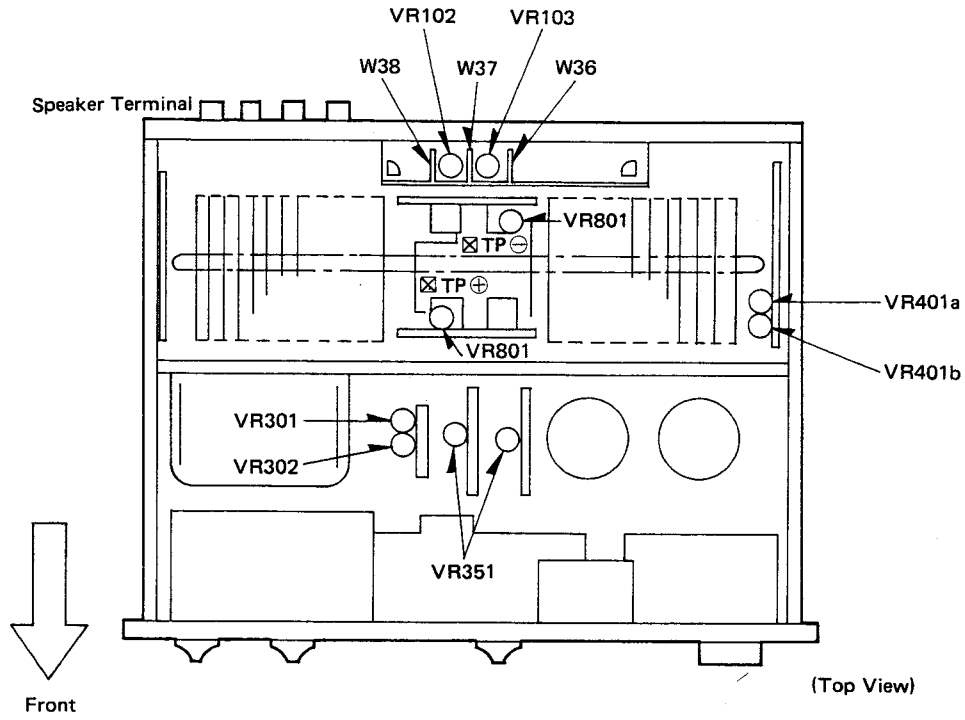
6. Alignment of Mainamp. section DC Offset and Idling Current

- (1) Connect a DC voltmeter in between the ground and the check-points, TP(L-CH) shown on PB-1403-2 and TP(R-CH) on PB-1403-3.
- (2) Adjust VR351 shown on PB-1400-2 (2 pcs. for L-CH and R-CH) to make the voltmeter read 0V.
- (3) Connect a DC voltmeter to each both ends of R814a(0.22-Ohm, L-CH) shown on PB-1403-2 and R814b(0.22-Ohm, R-CH).
- (4) Adjust VR801a(L-CH) shown on PB-1403 and VR801b(R-CH) on PB-1403-1 to make the voltmeter read 160mV.

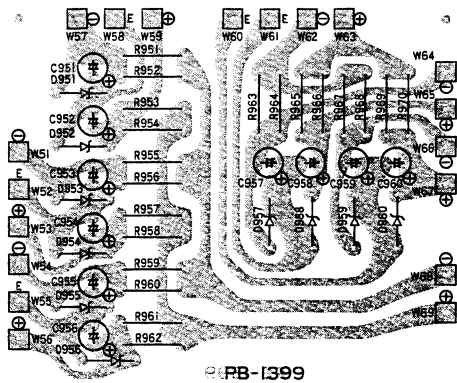
Pre-Heating Switch: When this switch is switched ON with Power Switch OFF, Pre-Heating Indicator lights up, while other indicators would not light up. Current only to the final transistors is cut off and others are kept in operation.

Adjustment Locations

L-550



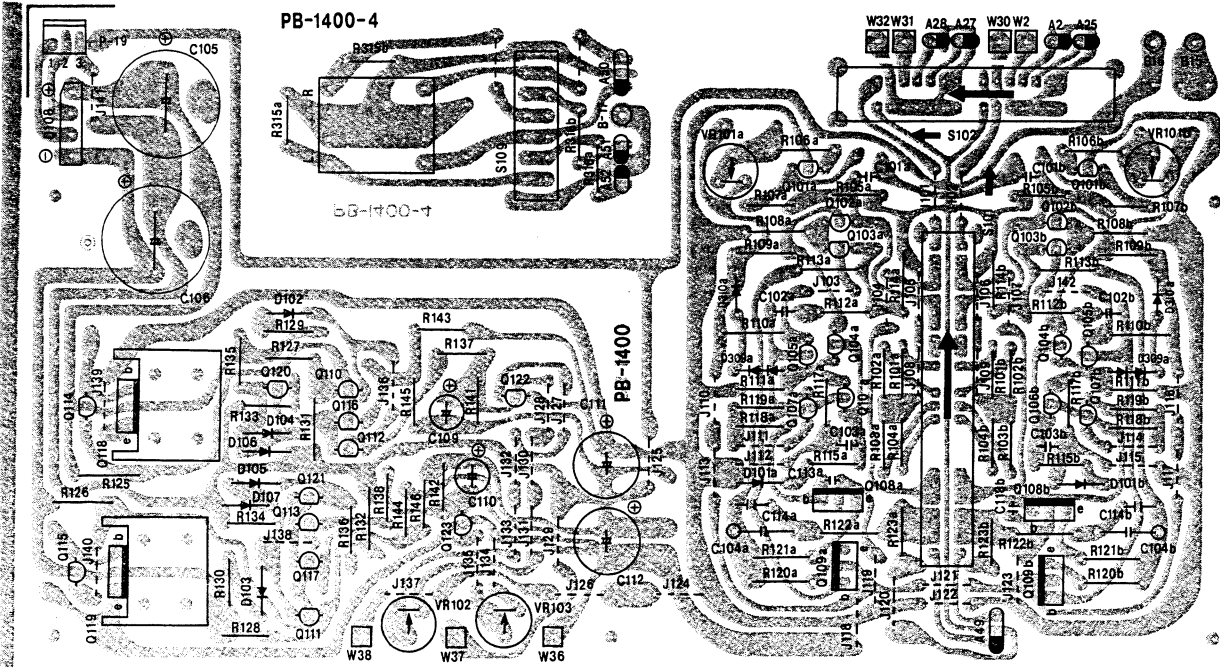
PB1399 Parts List



Symbol No.	Stock No.	Description
(Zener, Diode)		
D951	TD0043	WZ-130
D952	TD0043	WZ-130
D953	TD0043	WZ-130
D954	TD0043	WZ-130
D955	TD0043	WZ-130
D956	TD0043	WZ-130
D957	TD0043	WZ-130
D958	TD0043	WZ-130
D959	TD0043	WZ-130
D960	TD0043	WZ-130
(Capacitor)		
C951	CE0075	22uF 16V E1

Symbol No.	Stock No.	Description
C952	CE0075	22uF 16V E1
C953	CE0075	22uF 16V E1
C954	CE0075	22uF 16V E1
C955	CE0075	22uF 16V E1
C956	CE0075	22uF 16V E1
C957	CE0075	22uF 16V E1
C958	CE0075	22uF 16V E1
C959	CE0075	22uF 16V E1
C960	CE0075	22uF 16V E1
	CK0145	0.022uF 50V Ce
(Resistor)		
R951	RD2600	5.6K 1/2W Rd
R952	RD2602	6.8K 1/2W Rd
R953	RD2600	5.6K 1/2W Rd
R954	RD2602	6.8K 1/2W Rd
R955	RD2600	5.6K 1/2W Rd
R956	RD2602	6.8K 1/2W Rd
R957	RD2600	5.6K 1/2W Rd
R958	RD2602	6.8K 1/2W Rd
R959	RD2600	5.6K 1/2W Rd
R960	RD2602	6.8K 1/2W Rd
R961	RD2600	5.6K 1/2W Rd
R962	RD2602	6.8K 1/2W Rd
R963	RD2600	5.6K 1/2W Rd
R964	RD2600	5.6K 1/2W Rd
R965	RD2600	5.6K 1/2W Rd
R966	RD2600	5.6K 1/2W Rd
R967	RD2600	5.6K 1/2W Rd
R968	RD2600	5.6K 1/2W Rd
R969	RD2600	5.6K 1/2W Rd
R970	RD2600	5.6K 1/2W Rd

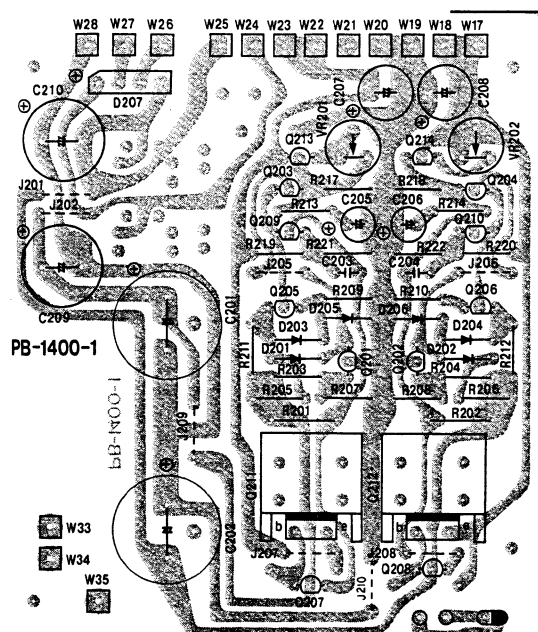
PB1400 Parts List



Symbol No.	Stock No.	Description
(Slide Switch)		
S101	SS0146	SSR266N (Cartridge)
S102	SS0145	SSR24601D (Function)
(Semi-Fixed Resistor)		
VR101a,b	RT0125	CR29R 2.2KB
VR102	RT0124	SR29R 2.2KB
VR103	RT0124	SR29R 2.2KB
(Transistor, FET)		
Q101a,b	TR5004	2SC2240-BL
Q102a,b	TR0372	2SA1114-F
Q103a,b	TR0372	2SA1114-F
Q104a,b	TR5004	2SC2240
Q105a,b	TR5004	2SC2240
Q106a,b	TR5005	2SA970
Q107a,b	TR0198	2SC1815
Q108a,b	TR0121	2SC1626
Q109a,b	TR0122	2SA816
Q110	TR0087	2SA1015
Q111	TR0198	2SC1815
Q112	TR0198	2SC1815
Q113	TR0087	2SA1015
Q114	TR0198	2SC1815
Q115	TR0087	2SA1015
Q116	TR0198	2SC1815
Q117	TR0087	2SA1015
Q118	TR0190	2SC1624
Q119	TR0188	2SA814
Q120	TR0198	2SC1815
Q121	TR0087	2SA1015
Q122	TF0033	2SK30A-TM
Q123	TF0033	2SK30A-TM
(Diode, Varistor)		
D101a,b	TD0227T	1SS41
D102	TD0227T	1SS41
D103	TD0227T	1SS41
D104	TD0227T	1SS41
D105	TD0227T	1SS41
D106	TD0227T	1SS41
D107	TD0227T	1SS41
D108	TD0137	S1VB10
D309a,b	TV0021	KB465 Varistor
D310a,b	TV0033	KB365 Varistor
(Capacitor)		
C101a,b	CM0175	1000pF 500V Mi
C102a,b	CM0068	100pF 50V Mi
C103a,b	CM0072	150pF 50V Mi
C104a,b	CQ0697	1uF 100V Fi
C105	CE1455	3300uF 25V E1
C106	CE1455	3300uF 25V E1
C109	CE1977	4.7uF 50V E1

Symbol No.	Stock No.	Description
C110	CE1977	4.7uF 50V E1
C111	CE0075	22uF 16V E1
C112	CE0075	22uF 16V E1
C113a,b	CM0060	47pF 50V Mi
C114a,b	CM0172	680pF 500V Mi
	CM0153	22pF 500V Mi
(Resistor)		
R101a,b	RB0348T	100 Rd
R102a,b	RB0416T	68K Rd
R103a,b	RB0352T	150 Rd
R104a,b	RB0340T	47 Rd
R105a,b	RB0358T	270 Rd
R106a,b	RD2572	390 1/2W Rd
R107a,b	RB0408T	33K Rd
R108a,b	RD2578	680 1/2W Rd
R109a,b	RD2570	330 1/2W Rd
R110a,b	RD2570	330 1/2W Rd
R111a,b	RB0400T	15K Rd
R112a,b	RB0340T	47 Rd
R113a,b	RD2550	47 1/2W Rd
R114a,b	RB0308	2.2 Rd
R115a,b	RB0360T	330 Rd
R117a,b	RB0360T	330 Rd
R118a,b	RB0370T	820 Rd
R119a,b	RB0362T	390 Rd
R120a,b	RS2501L	10 1/2W Rf
R121a,b	RS2501L	10 1/2W Rf
R122a,b	RD2546	33 1/2W Rd
R123a,b	RB0444T	1M Rd
R125	RD2632	120K 1/2W Rd
R126	RD2632	120K 1/2W Rd
R127	RB0360T	330 Rd
R128	RB0360T	330 Rd
R129	RB0360T	330 Rd
R130	RB0360T	330 Rd
R131	RD2610	15K 1/2W Rd
R132	RD2608	12K 1/2W Rd
R133	RB0346T	82 Rd
R134	RB0346T	82 Rd
R135	RB0390T	5.6K Rd
R136	RB0390T	5.6K Rd
R137	RB0336T	33 Rd
R138	RB0336T	33 Rd
R141	RB0394T	8.2K Rd
R142	RB0394T	8.2K Rd
R143	RD0458	4.7K 1/3W Rd
R144	RD0458	4.7K 1/3W Rd
R145	RD0458	4.7K 1/3W Rd
R146	RD0458	4.7K 1/3W Rd

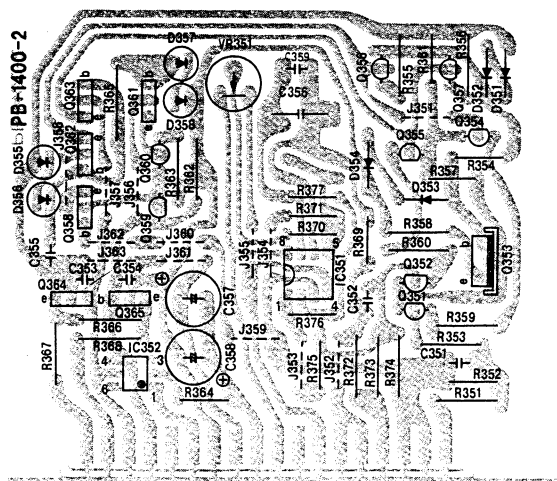
PB1400-1 Parts List



Symbol No.	Stock No.	Description
(Transistor, FET)		
Q201	TR0087	2SA1015
Q202	TR0198	2SC1815
Q203	TR5004	2SC2240
Q204	TR5005	2SA970
Q205	TR0198	2SC1815
Q206	TR0087	2SA1015
Q207	TR0198	2SC1815
Q208	TR0087	2SA1015
Q209	TR5004	2SC2240
Q210	TR5005	2SA970
Q211	TR0190	2SC1624
Q212	TR0188	2SA814
Q213	TF0033	2SK30A-TM
Q214	TF0033	2SK30A-TM
(Diode)		
D201	TD0227T	1SS41

Symbol No.	Stock No.	Description
D202	TD0227T	1SS41
D203	TD0227T	1SS41
D204	TD0227T	1SS41
D205	TD0227T	1SS41
D206	TD0227T	1SS41
D207	TD0139	S1VB20
(Capacitor)		
C201	CE1909	1000uF 50V E1
C202	CE1909	1000uF 50V E1
C203	CM0056	33pF 50V Mi
C204	CM0056	33pF 50V Mi
C205	CE1977	4.7uF 50V E1
C206	CE1977	4.7uF 50V E1
C207	CE0100	10uF 50V E1
C208	CE0100	10uF 50V E1
C209	CE2048	470uF 50V E1
C210	CE2048	470uF 50V E1
	CK0145	0.022uF 50V Ce
(Semi-Fixex Resistor)		
VR201	RT0100	SR19R 2.2KB
VR202	RT0100	SR19R 2.2KB
(Resistor)		
R201	RD2632	120K 1/2W Rd
R202	RD2632	120K 1/2W Rd
R203	RB0360T	330 Rd
R204	RB0360T	330 Rd
R205	RB0360T	330 Rd
R206	RB0360T	330 Rd
R207	RB0406T	27K Rd
R208	RB0402T	18K Rd
R209	RB0346T	82 Rd
R210	RB0346T	82 Rd
R211	RB0408T	33K Rd
R212	RB0408T	33K Rd
R213	RB0336T	33 Rd
R214	RB0336T	33 Rd
R217	RB0392T	6.8K Rd
R218	RB0392T	6.8K Rd
R219	RD0450	22K 1/3W Rd
R220	RD0450	22K 1/3W Rd
R221	RD0460	3.3K 1/3W Rd
R222	RD0460	3.3K 1/3W Rd

PB1400-2 Parts List

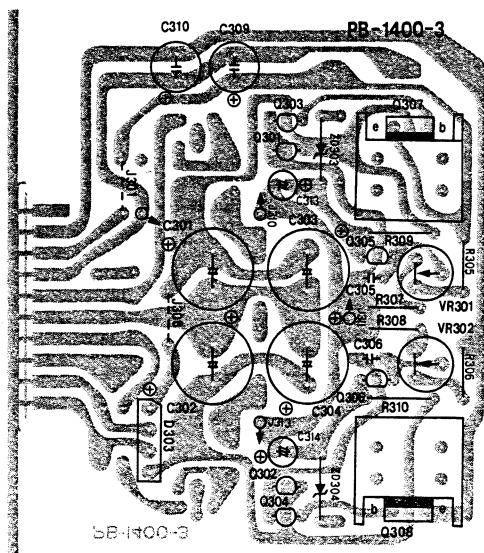


Symbol No.	Stock No.	Description
(Semi-Fixed Resistor)		
VR351a,b	RT0017	SR29R 47KB
(IC)		
IC351a,b	TC5040	NJM082D
IC352a,b	TC0199	NJL5160D
(Transistor, FET)		
Q351,2	TF0032	2SK146-BL
Q353a,b	TR0121	2SC1626
Q354a,b	TR0236	2SC2229
Q355a,b	TR0236	2SC2229
Q356a,b	TR0087	2SA1015

Symbol No.	Stock No.	Description
Q357a,b	TR0087	2SA1015
Q358a,b	TR0369	2SA1144
Q359a,b	TR0198	2SC1815
Q360a,b	TR0198	2SC1815
Q361a,b	TR0360	2SC2704
Q362a,b	TR0369	2SA1144
Q363a,b	TR0369	2SA1144
Q364a,b	TR0318	2SC1904-BV
Q365a,b	TR0342	2SA899-BV
	TF0018	2SK147-BK
(Diode,Varistor)		
D351a,b	TD0227T	1SS41
D352a,b	TD0227T	1SS41
D353a,b	TD0227T	1SS41
D354a,b	TD0227T	1SS41
D355a,b	TV0033	KB365 Varistor
D356a,b	TV0033	KB365 Varistor
D357a,b	TV0033	KB365 Varistor
D358a,b	TV0033	KB365 Varistor
(Capacitor)		
C351a,b	CM0060	47pF 50V Mi
C352a,b	CM0050	10pF 50V Mi
C353a,b	CM0164	5pF 500V Mi
C354a,b	CM0164	5pF 500V Mi
C356a,b	CE5050	2.2uF 50V E1
C357a,b	CE0107	47uF 63V E1
C358a,b	CE0107	47uF 63V E1
C359a,b	CM0172	680pF 500V Mi

Symbol No.	Stock No.	Description
(Resistor)		
R351a,b	RD2574	470 1/2W Rd
R352a,b	RB0442T	820K Rd
R353a,b	RD2558	100 1/2W Rd
R354a,b	RB0416T	68K Rd
R355a,b	RS1445	47 1/3W Rf
R356a,b	RS1445	47 1/3W Rf
R357a,b	RB0408T	33K Rd
R358a,b	RS1445	47 1/3W Rf
R359a,b	RS1453	100 1/3W Rf
R360a,b	RS1453	100 1/3W Rf
R361a,b	RB0424T	150K Rd
R362a,b	RS1451	82 1/3W Rf
R363a,b	RS1451	82 1/3W Rf
R364a,b	RB0384T	3.3K Rd
R365a,b	RB0418	82K Rd
R366a,b	RS1473	560 1/3W Rf
R367a,b	RS1453	100 1/3W Rf
R368a,b	RS1453	100 1/3W Rf
R369a,b	RB0432T	330K Rd
R370a,b	RB0396T	10K Rd
R371a,b	RB0364T	470 Rd
R372a,b	RD2600	5.6K 1/2W Rd
R373a,b	RD2600	5.6K 1/2W Rd
R374a,b	RD0350	120 Rd
R375a,b	RB0404T	22K Rd
R376a,b	RB0398T	12K Rd
R377a,b	RB0398T	12K Rd

PB1400-3 Parts List



Symbol No.	Stock No.	Description
(Semi-Fixed Resistor)		
VR301	RT0026	SR29R 4.7KB
VR302	RT0026	SR29R 4.7KB
(Transistor,FET)		
Q301	TF0030	2SK117Y
Q302	TF0030	2SK117Y
Q303	TR5004	2SC2240
Q304	TR5005	2SA970

Symbol No.	Stock No.	Description
Q305	TR5004	2SC2240
Q306	TR5005	2SA970
Q307	TR0190	2SC1624
Q308	TR0188	2SA814
(Diode)		
D303	TD0139	SLVB20
(Zener,Diode)		
ZD303	TD0025	WZ090
ZD304	TD0025	WZ090
(Capacitor)		
C301	CE2077	220uF 100V E1
C302	CE2077	220uF 100V E1
C303	CE2077	220uF 100V E1
C304	CE2077	220uF 100V E1
C305	CM0056	33pF 50V E1
C306	CM0056	33pF 50V E1
C309	CE0147	10uF 63V E1
C310	CE0147	10uF 63V E1
C313	CE1948	22uF 16V E1
C314	CE1948	22uF 16V E1
(Resistor)		
R305	RD0449	27K 1/3W Rd
R306	RD0449	27K 1/3W Rd
R307	RD0456	6.8K 1/3W Rd
R308	RD0456	6.8K 1/3W Rd
R309	RD2606	10K 1/2W Rd
R310	RD2606	10K 1/2W Rd